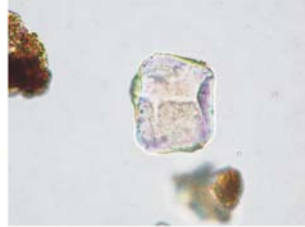




Paniceae type  
sample No.23



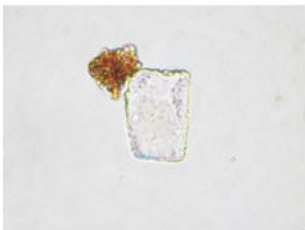
Paniceae type  
sample No.26



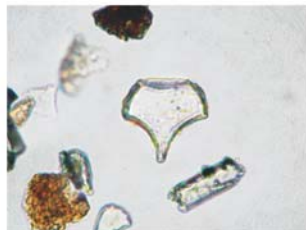
Miscanthus type  
sample No.4



Miscanthus type  
sample No.4



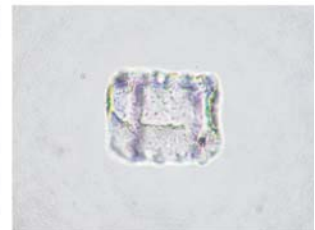
Andropogoneae A type  
sample No.10



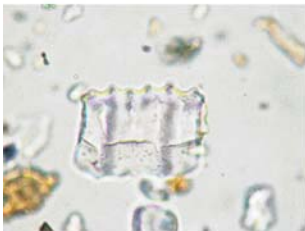
Zoysia  
sample No.34



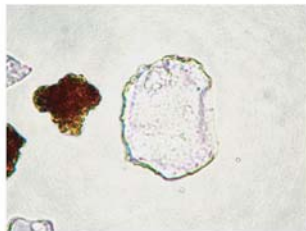
Pleioblastus sect.  
Nipponocalamus sample No.2



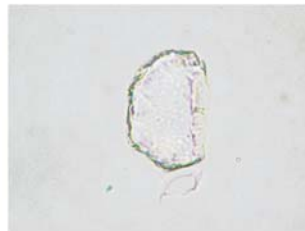
Pleioblastus sect. Nezasa  
sample No.2



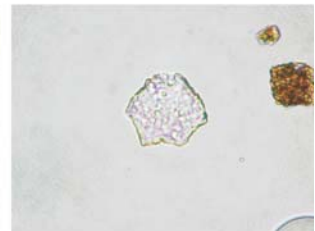
Pleioblastus sect. Nezasa  
sample No.4



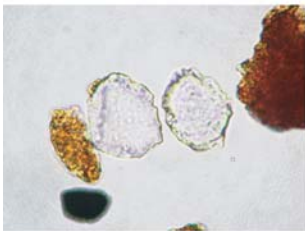
Sasa sect. Sasa etc.  
sample No.8



Sasa sect. Sasa etc.  
sample No.8



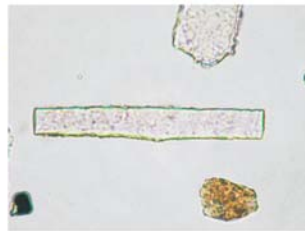
Sasa sect. Crassinodi  
sample No.8



Sasa sect. Crassinodi  
sample No.98



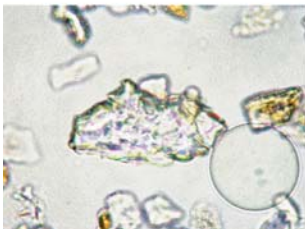
Husk hair origin  
sample No.1



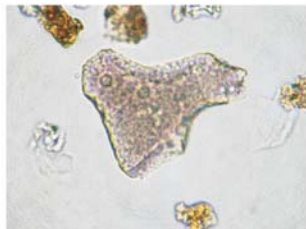
Rod-shaped  
sample No.40



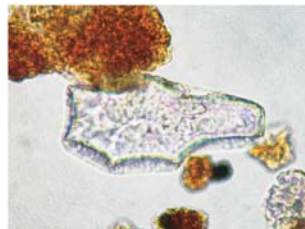
Fern  
sample No.40



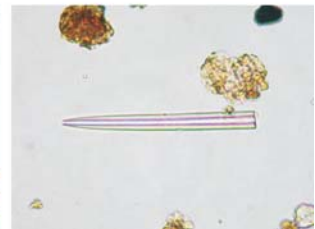
Arboreal  
sample No.14M



Arboreal  
sample No.33



Arboreal  
sample No.98



Sponge spicules 50 μm  
sample No.15