

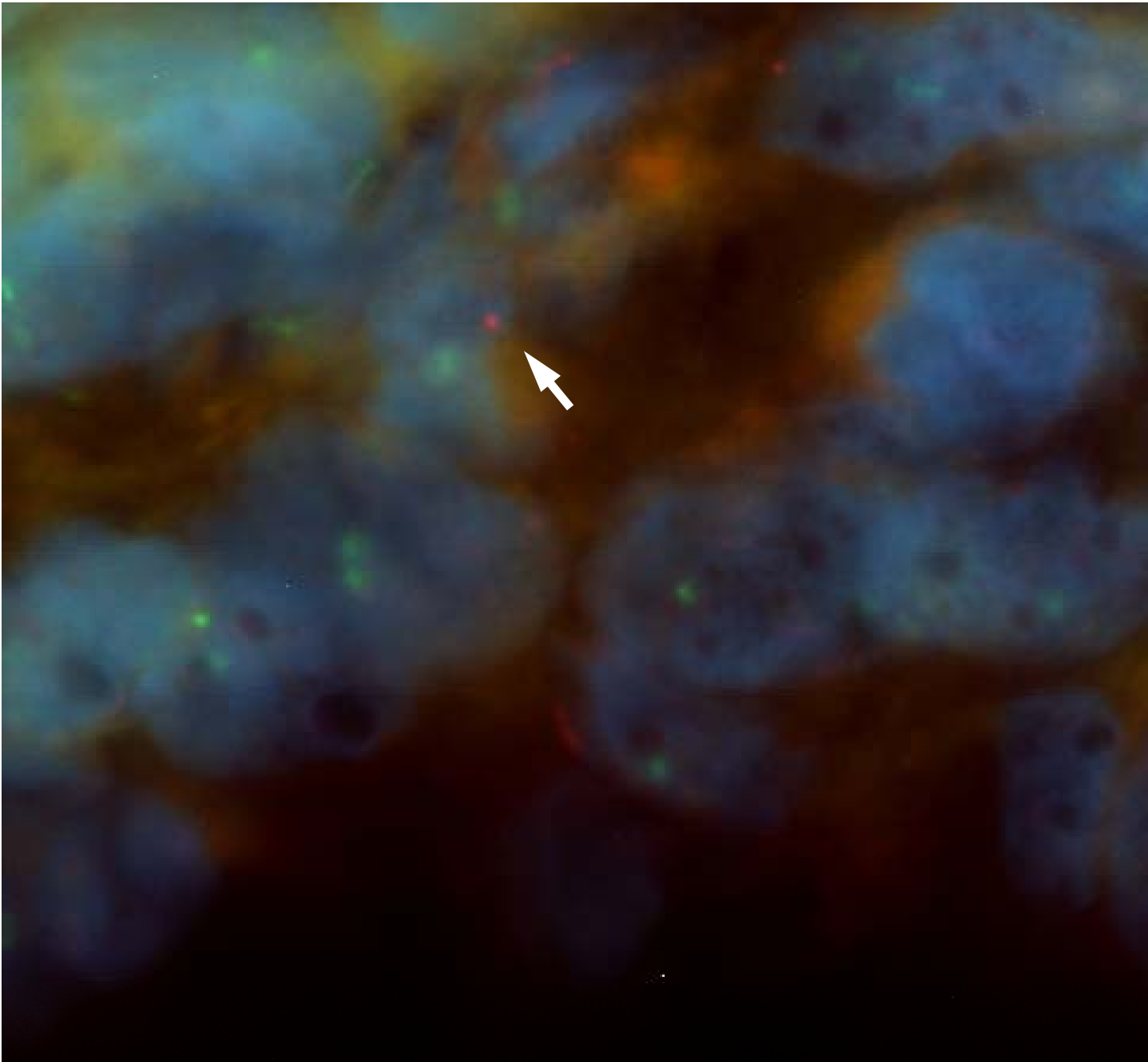
# TABLE 1. Characteristics of transplanted FAP patients

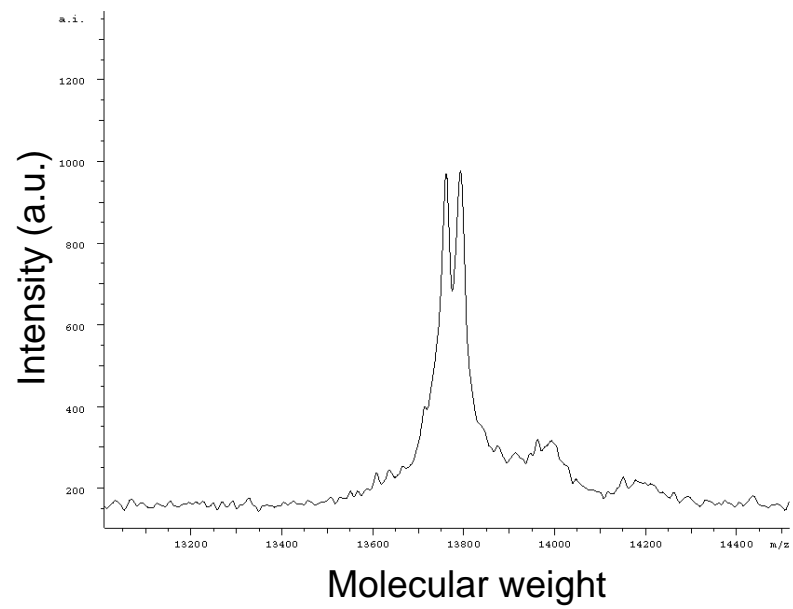
Patient No.	Age at LT	Sex	Disease duration before LT (years)	Preoperative mBMI	Graft type	ATTR mRNA expression in transplanted liver (Evaluation point)	Mass spectrometry (Evaluation point)	Progressed symptoms	Immunosuppressant
1	28	M	3	779	Whole liver	Autopsy (13 years)	-	Cardiac symptom Ocular symptom	CsA Prednisolon → tapering
2	47	F	5	651	Whole liver	Autopsy (7 years)	-	Cardiac symptom Ocular symptom	CsA → FK Prednisolon → tapering
3	43	M	1	874	Whole liver	-	+ (13 years)	No change	FK Prednisolon → tapering
4	49	M	4	734	Right lobe	Biopsy (7 years)	+ (8 years)	Cardiac symptom Ocular symptom Peripheral neuropathy	FK Prednisolon → tapering
5	39	F	3	536	Left lobe	-	+ (1 years)	No change	FK MMF Prednisolon → tapering
6	36	F	4	601	Left lobe	-	+ (0.9 years)	No change	FK MMF Prednisolon → tapering
7	29	M	1	897	Left lobe	-	+ (0.5 years)	No change	FK MMF Prednisolon → tapering

**Abbreviation:** mBMI, modified body mass index; M, male; F, female; MMF, mycophenolate mofetil; FK, tacrolimus; CsA, cyclosporine

TABLE 2. ATTR Val30Met mRNA expression

	Ct <sub>Val30Met</sub>	Ct <sub>wild-type</sub>	$\Delta$ Ct	Calculated Ratio of Val30Met mRNA (%)
Patient 1	24.5662	34.3508	9.7846	0
Patient 2	24.3829	34.5120	10.1291	0
Patient 4	18.6856	28.4121	9.7265	0
A FAP patient without LT (Positive control)	29.1393	28.4600	0.6793	39.2



**A****B**