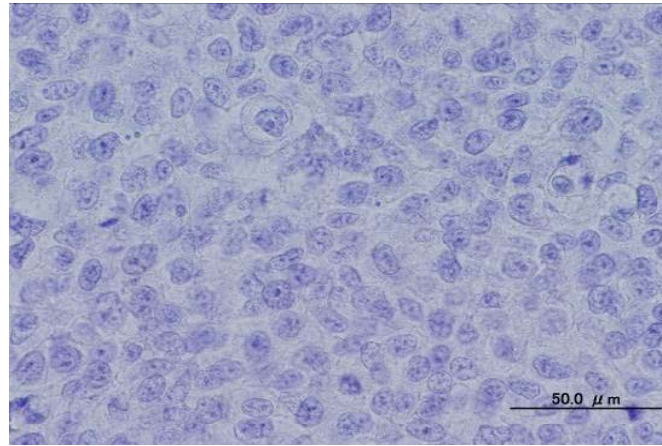
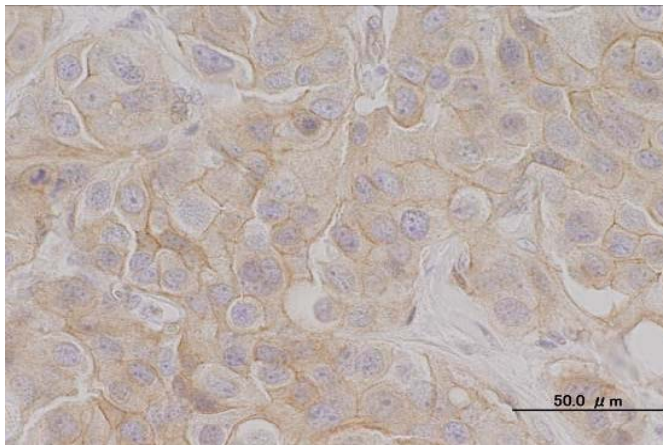
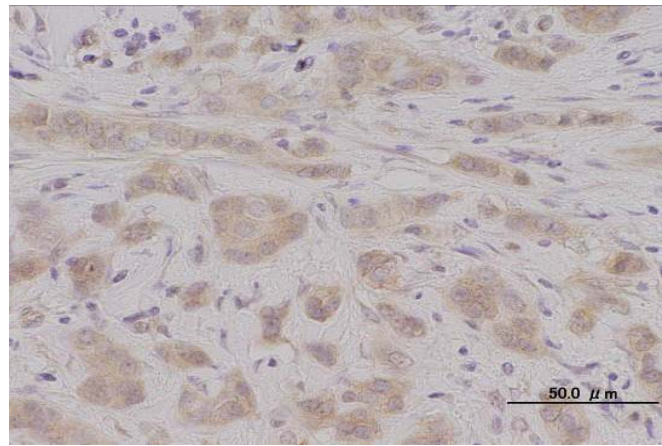
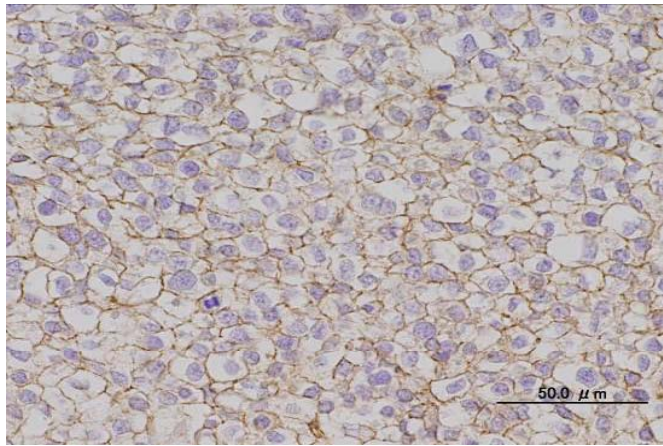
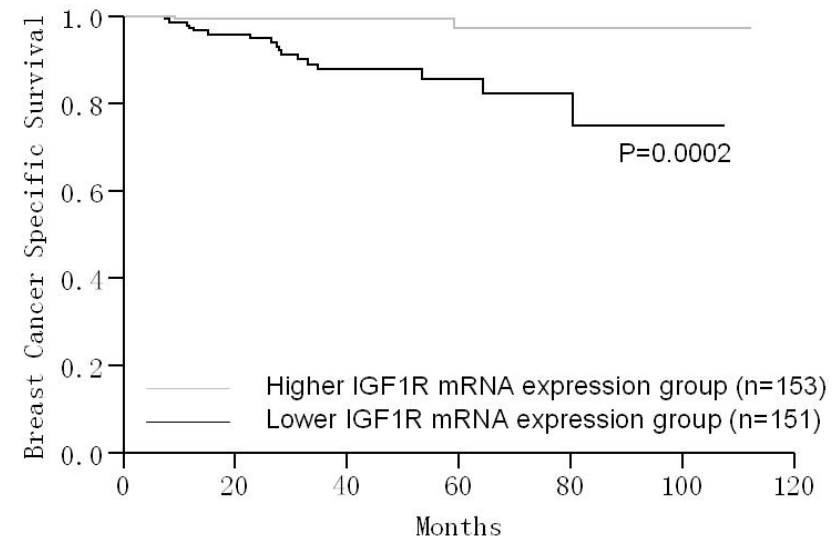
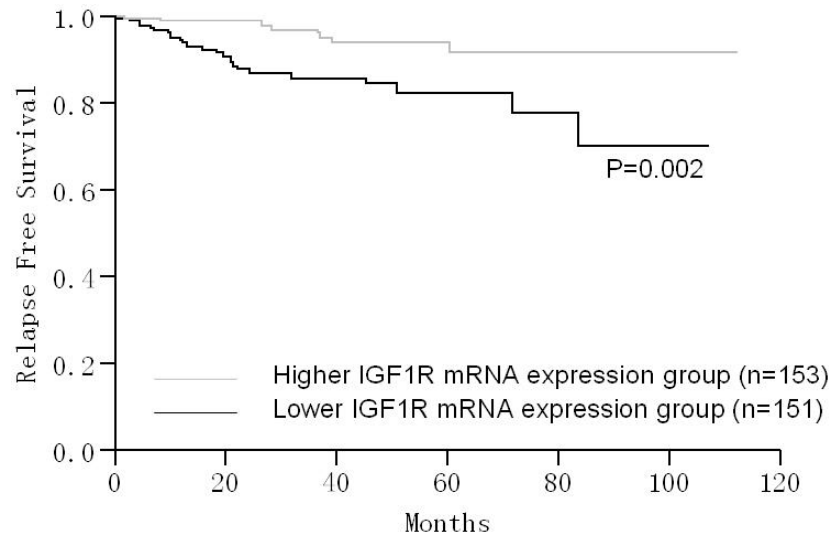


Staining patterns of IGF1R IHC: a membranous staining; b cytoplasmic staining; c mixed membranous and cytoplasmic staining; d negative staining (x40)

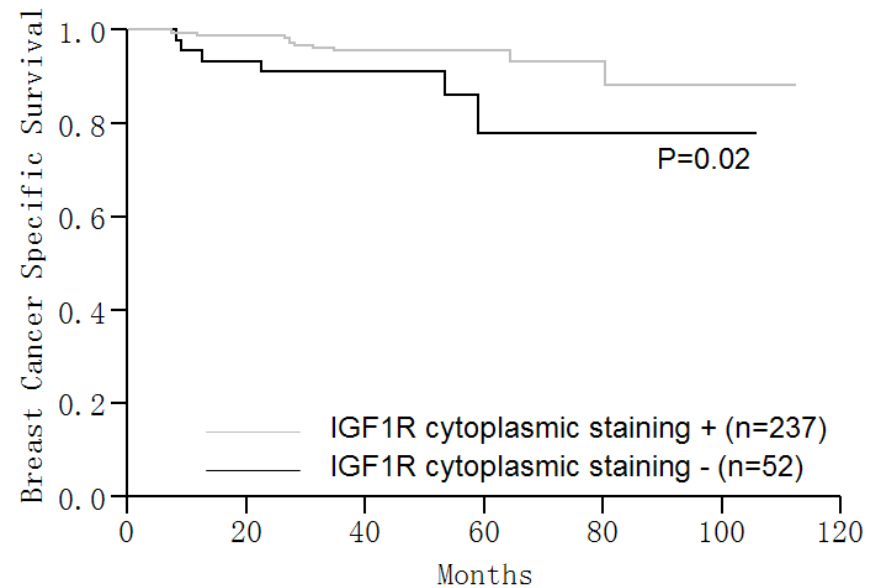
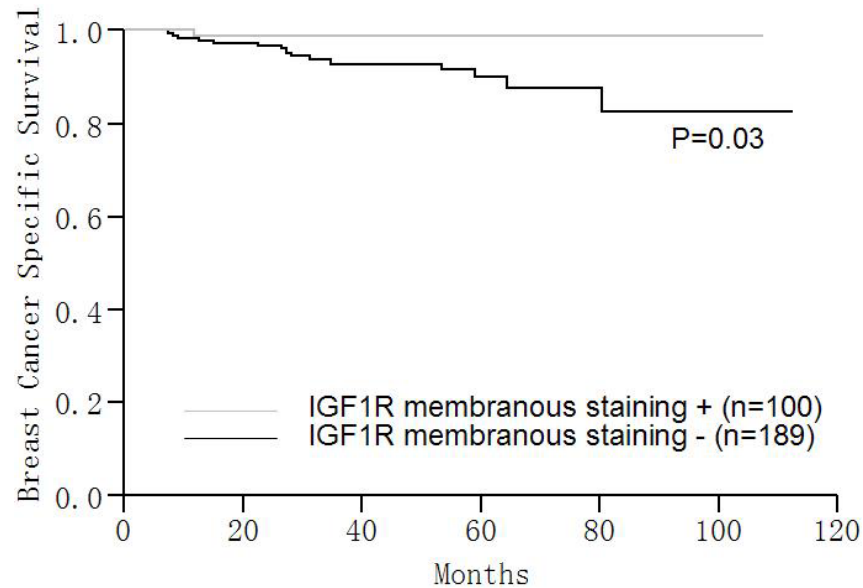


Kaplan-Meier plots of association of IGF1R mRNA expression with RFS (a) and BCSS (b).



With the cutoff point of median, patients showing higher IGF1R mRNA expression were associated with prolonged RFS (P=0.002) and increased BCSS (P=0.0002) when tested by Kaplan-Meier method and verified by the log-rank (Mantel-Cox) test

Kaplan-Meier plots of association of IGF1R protein expression and BCSS (a membranous expression; b cytopalsmic expression)



Membranous IGF1R expression (P=0.03) and cytoplasmic IGF1R expression (P=0.02) were associated with prolonged BCSS when tested by Kaplan-Meier method and verified by the log-rank (Mantel-Cox) test

Higher IGF1R gene copy number was significantly associated with positive membranous protein expression.

